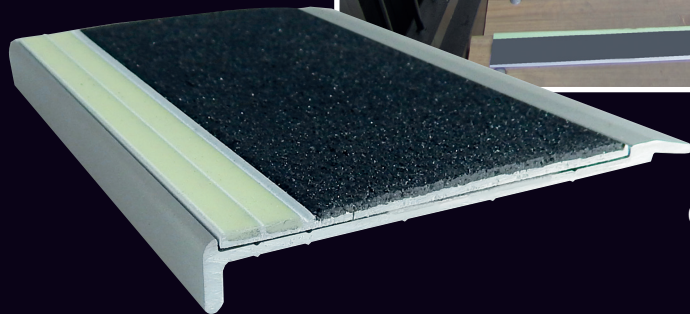
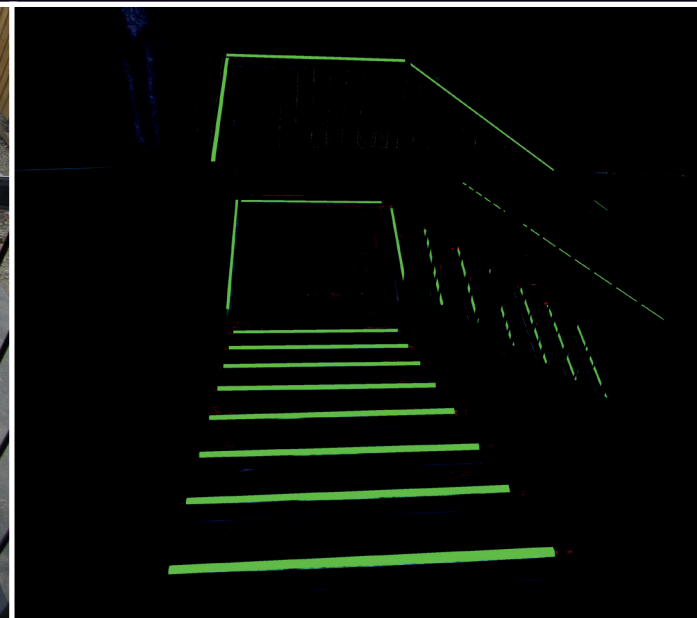
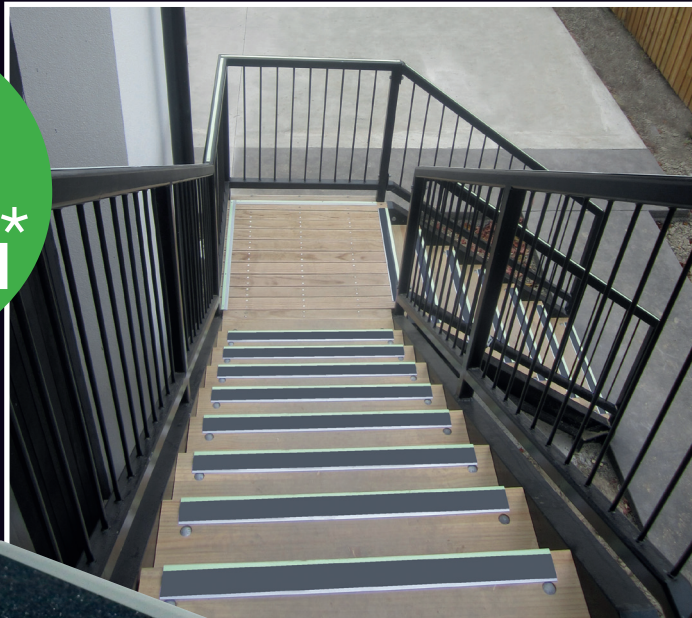


Emergency Lighting for Outdoor Stairways

TWO
CODES
ONE
SOLUTION*



Ecoglo has the solution for both emergency lighting and accessibility. As well as meeting AS1428.1, the F14-175 can be used as a Performance Solution to replace or enhance electrical emergency lighting in outdoor and daylight stairways. You are already installing 50mm of step edge contrast to meet AS1428.1 so use the same product to provide an emergency lighting solution.

* Both the F14-175 step nosing and E14-075 step edge contrast satisfy BCA Vol 1 clause D3.3a by meeting AS1428.1.

Those products can also be used in a photoluminescent performance solution to satisfy clause EP4.



COST EFFECTIVE



SUSTAINABLE



RELIABLE



LOW MAINTENANCE

 **ecoglo**[®]

VISIBLY BETTER

Contact us today to solve your emergency lighting problems

www.ecoglo.com.au

Australia@ecoglo.com

+61 3 8691 5288